

What to Bring

- Toiletries, shower caddy, shower shoes
- Linens: towels, bedding (twin XL)
- Laundry supplies including HE detergent
- Hangers
- Alarm clock
- Surge protectors - UL or ETL approved
- Trash can & trash bags
- Flashlight
- Umbrella
- Charging cords and power bank
- Desk lamp - non-halogen
- Laptop and printer (computer labs and printing available around campus)
- Stapler, staples, paper clips, scissors
- Painter's tape for hanging items
 - 3M Command hooks or other types of adhesives are **NOT** recommended
 - Students are responsible for any damage to University property
- First aid supplies

Items to Coordinate with Roommate(s)

- Carpet/rugs
- Vacuum, broom/dust pan, sweeper
- Cleaning supplies
- TV (one with streaming capabilities recommended)
- Refrigerator under 4.0 cubic ft (suites only)
- Bathroom supplies (suites only)
 - Toilet paper
 - Shower curtain
 - Bath mats



Love Where You Live

A Guide to Living in the Residence Halls



What Not to Bring

- Refrigerators larger than 4.0 cubic feet
- Extension cords that are not UL listed
- Electrical cooking devices of any kind including, but not limited to microwaves, coffee makers (except Keurig-style), electric/gas grills, toasters, toaster ovens, hot plates, deep fryers, air fryers
- Portable heaters
- Black lights or halogen lamps of any kind
- Darts and dart board (other than Velcro)
- Animals of any kind except fish (max. 10-gallon tank) and service or emotional support animals approved by Accessibility Services
- Weapons of any kind (firearms, including pellet guns/paintball guns, ammunition, etc.)
- Fireworks or explosives
- Flammable materials including, but not limited to candles, incense, electric candle warmers, lighter fluid
- Wall mounted shelves
- Cinder blocks/bricks/rocks

All students must abide by our policies that can be found in the Guide to Residence Life and Student Handbook.



Gwynedd Mercy University

The Office of Residence Life



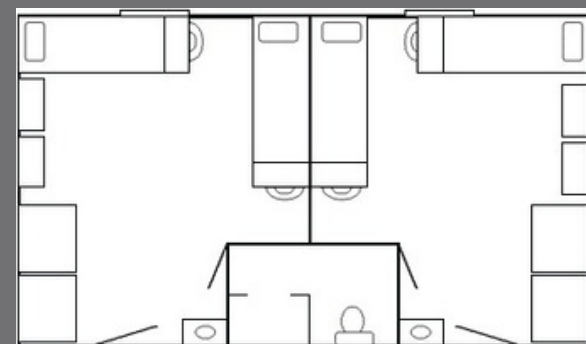
All Buildings

- Air: In-room AC unit
- Bed measurements: 7'x5.5' (twin XL)
- Cable: Free YouTubeTV in lounges
- Internet: Wireless throughout
- Kitchens: Full kitchens in Siena Hall, microwaves available in most lounges
- Laundry: Free washers and dryers on every floor



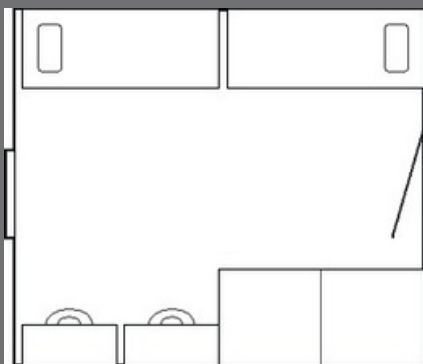
St. Brigid & Siena Halls

- Accommodations: Suite-style double-occupancy
- Designation: Single gender by suite, co-ed by floor
- Bathrooms: Sink in each room, two rooms share a semi-private bathroom
- Furniture: bed, mattress, desk, chair, dresser, and wardrobe - 1 per resident
- Dimensions: 14'6"x13'4"



Loyola Hall

- Accommodations: Traditional double-occupancy
- Designation: Single gender by wing
- Heat: Baseboard heating
- Bathrooms: Community-style on each wing
- Furniture: bed, mattress, desk, nightstand, chair, and wardrobe - 1 per resident. One micro-fridge will be provided. Additional fridges will not be permitted in Loyola Hall
- Dimensions: 15'7" x 9'4"



Contact Us

 gmercyureslife

267-448-1305

reslife@gmercyu.edu

